

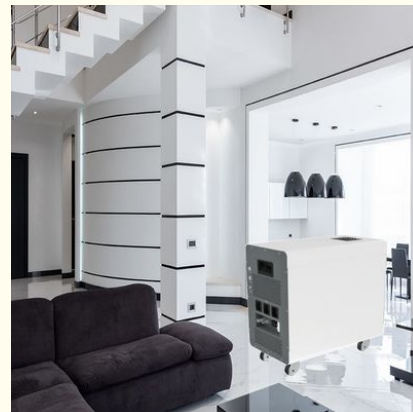


Rack Mounted Lithium Ion LFP Wall Battery 8500 Cycle Lifepo4 Storage For Solar System Home Energy Storage

Our Product Introduction

Basic Information

- Place of Origin: China
- Brand Name: XWELL
- Certification: UN38.3, MSDS, UL, CB, BIS, PSE, GB4943.1 safety standard, CE, FCC, ROHS, battery UN38.3, MSDS, UL, CB, BIS, PSE
- Model Number: XW-5120W-1
- Minimum Order Quantity: 1 pcs
- Packaging Details: Carton
- Delivery Time: 7-10 working days
- Payment Terms: L/C, D/A, D/P, T/T, Western Union, MoneyGram
- Supply Ability: 5000 pcs per month



Product Specification

- Place Of Origin: Guangdong, China
- System Type: Rack-mounted
- Pack Capacity: 50Ah 100Ah 200Ah
- Pack Energy: 2.56Kwh 5.12Kwh 10.24Kwh (Optional)
- Discharge Current: 50A
- Max Charge Current: 50A
- Discharge Cut-off Voltage: 42.5V
- Display: LCD Optional
- Communication Interface: RS485, RS232, CAN
- Cycle Life: >6000 Cycles(80%DOD)
- Highlight: **Rack Mounted Lithium Ion Battery,
Solar System Lithium Ion Battery,
8500 Cycle Lifepo4 Battery**

Product Description

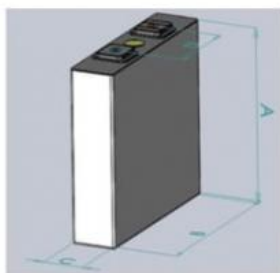
Rack Mounted Lithium Ion LFP Wall Battery 8500 Cycle Lifepo4 Storage For Solar System Home Energy Storage

Support unlimited parallel to enlarge usable capacity maximum support 16 parallel communication. Enlarged capacity can be 10kw/20kw/30kw...to meet your different application.

Rackmount Lithium Battery Specification

| Model | 51.2V50Ah | 51.2V100Ah | 51.2V200Ah |
|-----------------------------|-----------------------|-------------------|-------------------|
| Nominal voltage | 51.2V | | |
| Nominal capacity (kwh) | 2.56 | 5.12 | 10.24 |
| Cell type | LiFePO4 | | |
| Standard charge voltage | 54.6V(adjustable) | | |
| Max charge current | 50A | | |
| Discharge cut-off voltage | 42.5V(adjustable) | | |
| Max discharge current | 50A | | |
| Display | LCD(Optional) | | |
| Communication interface | CAN/RS485/RS232 | | |
| Cycle life | >6000 Cycles (80%DOD) | | |
| Charge temperature range | 0~45°C | | |
| Discharge temperature range | -20~60°C | | |
| Color | Black | | |
| Dimension (mm) | 442x410x133 3U | 442x410x177 4U | 550x442x220 5U |
| Weight | About 35Kg | About 42Kg | About 84Kg |
| Installation method | Rack Mount | | |

Cell Specification of Rackmount Lithium Battery



| # | Item | Parameter |
|---|---------------|------------|
| A | Height | 119±1.0 mm |
| B | Width | 160±1.0 mm |
| C | Thickness | ≤50 mm |
| D | Tabs Distance | 97±0.5 mm |

Operation Pannel of Rackmount Lithium Battery



Size of Rackmount Lithium Battery



Structure of Rackmount Lithium Battery



| # | Item | Material |
|------|------------------------------|---------------------|
| (1) | Case Cover | SPCC |
| (2) | Case Hanger | SPCC |
| (3) | Insulation Sheet | Ethoxyline |
| (4) | Bus-Bar | Aluminum Alloy |
| (5) | Battery Cell | LFP, Aluminum Shell |
| (6) | Module Side Plate | ABS / PC |
| (7) | Cell Binding Loop | Plastic Steel |
| (8) | Case Bottom | SPCC |
| (9) | Insulating Wiring Terminal | Bakelite |
| (10) | Side Plate Combination Board | SPCC |
| (11) | BMS | PCB |
| (12) | Commination Board | PCB |
| (13) | DC Switch | / |
| (14) | Handle | Sherardized SPCC |
| (15) | Case Front Cover | SPCC |
| (16) | Terminal Bar (+ & -) | / |

Application of Rackmount Lithium Battery

Application Scenario



Data Center



C&I Park



Telecom Base



Medical Equipment

What We Offer?

Supply chain solution, strict quality control, real-time response
OEM/ODM Manufacturer, custom sizes and shapes available on request
Suggestion of new design or material, new technology and cost structure
Engineers team at your service
Flexible small orders are acceptable
One-stop supply to eliminating messy links



XWELL GUANGDONG XWELL TECHNOLOGY CO., LTD.

+86 18620492985

sales@esslithiumbattery.com

esslithiumbattery.com

Room 322, Building 3, No. 801, Qiaoxing Avenue, Xiaoluo Village, Shatou Street, Panyu District, Guangzhou, China