

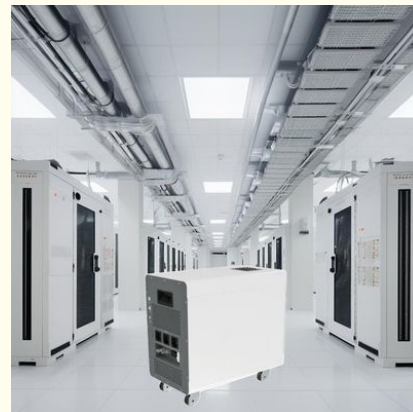


## 5.12KWh Residential Energy Storage System Rack Mounted Lithium Battery

### Our Product Introduction

#### Basic Information

- Place of Origin: China
- Brand Name: XWELL
- Certification: UN38.3, MSDS, UL, CB, BIS, PSE, GB4943.1 safety standard, CE, FCC, ROHS, battery UN38.3, MSDS, UL, CB, BIS, PSE
- Model Number: XW-5120W-1
- Minimum Order Quantity: 1 pcs
- Packaging Details: Carton
- Delivery Time: 7-10 working days
- Payment Terms: L/C, D/A, D/P, T/T, Western Union, MoneyGram
- Supply Ability: 5000 pcs per month



#### Product Specification

- Certification: CE, TUV, RoHS, UN38.3
- Minimum Order Quantity: 1
- Pack Capacity: 50Ah 100Ah 200Ah
- Pack Energy: 2.56Kwh 5.12Kwh 10.24Kwh (Optional)
- Discharge Current: 50A
- Max Charge Current: 50A
- Discharge Cut-off Voltage: 42.5V
- Display: LCD Optional
- Communication Interface: RS485, RS232, CAN
- Cycle Life: >6000 Cycles(80%DOD)
- Highlight: **Rack Mounted Lithium Battery,  
5.12KWh Rack Mounted Lithium Battery,  
Rack Mounted Lithium Battery**

## Product Description

### 5.12KWh Residential Energy Storage System Rack Mounted Lithium Battery

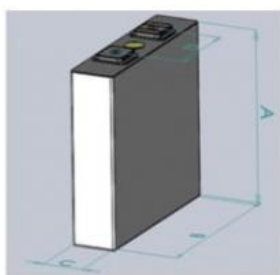
Our Rack Mount Lithium Battery, a high-performance energy storage solution designed to meet your power needs. With a capacity of 5.12KWh and a life cycle of 6000 times, this battery offers reliable and long-lasting performance. It is scalable up to 16 units, allowing for increased capacity as your energy requirements grow.

**Safety Protection:** The Rack Mount Lithium Battery is equipped with comprehensive safety features including overcharge, overdischarge, overcurrent, short circuit, and temperature protection. This ensures the safety of your home energy system and extends the lifespan of the battery.

#### Rackmount Lithium Battery Specification

Model	51.2V50Ah	51.2V100Ah	51.2V200Ah
Nominal voltage	51.2V		
Nominal capacity (kwh)	2.56	5.12	10.24
Cell type	LiFePO4		
Standard charge voltage	54.6V(adjustable)		
Max charge current	50A		
Discharge cut-off voltage	42.5V(adjustable)		
Max discharge current	50A		
Display	LCD(Optional)		
Communication interface	CAN/RS485/RS232		
Cycle life	>6000 Cycles (80%DOD)		
Charge temperature range	0~45°C		
Discharge temperature range	-20~60°C		
Color	Black		
Dimension (mm)	442x410x133 3U	442x410x177 4U	550x442x220 5U
Weight	About 35Kg	About 42Kg	About 84Kg
Installation method	Rack Mount		

#### Cell Specification of Rackmount Lithium Battery



#	Item	Parameter
A	Height	119±1.0 mm
B	Width	160±1.0 mm
C	Thickness	≤ 50 mm
D	Tabs Distance	97±0.5 mm

#### Operation Pannel of Rackmount Lithium Battery



### Size of Rackmount Lithium Battery



### Structure of Rackmount Lithium Battery



#	Item	Material
(1)	Case Cover	SPCC
(2)	Case Hanger	SPCC
(3)	Insulation Sheet	Ethoxyline
(4)	Bus-Bar	Aluminum Alloy
(5)	Battery Cell	LFP, Aluminum Shell
(6)	Module Side Plate	ABS / PC
(7)	Cell Binding Loop	Plastic Steel
(8)	Case Bottom	SPCC
(9)	Insulating Wiring Terminal	Bakelite
(10)	Side Plate Combination Board	SPCC
(11)	BMS	PCB
(12)	Commination Board	PCB
(13)	DC Switch	/
(14)	Handle	Sherardized SPCC
(15)	Case Front Cover	SPCC
(16)	Terminal Bar (+ & -)	/

### Application of Rackmount Lithium Battery

## Application Scenario



Data Center



C&I Park



Telecom Base



Medical Equipment

### What We Offer?

Supply chain solution, strict quality control, real-time response  
OEM/ODM Manufacturer, custom sizes and shapes available on request  
Suggestion of new design or material, new technology and cost structure  
Engineers team at your service  
Flexible small orders are acceptable  
One-stop supply to eliminating messy links



**XWELL** GUANGDONG XWELL TECHNOLOGY CO., LTD.

+86 18620492985

sales@esslithiumbattery.com

esslithiumbattery.com

Room 322, Building 3, No. 801, Qiaoxing Avenue, Xiaoluo Village, Shatou Street, Panyu District, Guangzhou, China